

Carolyn Allen / Industrial Designer at Werx Design

Writer
chase.anderson@usu.edu

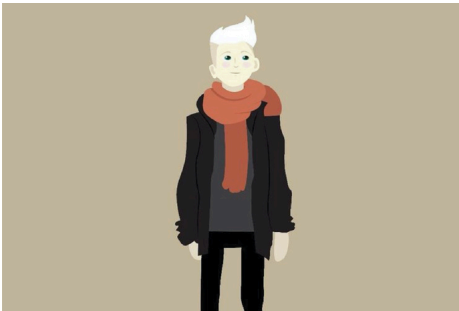
Chase Anderson

06/01/2021

[Outdoor Product Design and Development](#)

Carolyn Allen / Industrial Designer at Werx Design

By Chase Anderson | June 1, 2021



Carolyn Allen / Industrial Designer at Werx Design Carolyn Allen, an industrial designer at Werx Design, shared insights into portfolio do's and don'ts with students in the OPDD program. Allen shares some of their favorite portfolios as well as tips for how to stand out as a designer when seeking a job.

Prior to working at Werx Design, Allen worked at companies like Deckers, Merrell, and Lands End.

Watch the whole presentation on [YouTube](#) or listen on the [Highlander Podcast](#).

margin-3YouTube video player<https://www.youtube.com/embed/RDiulqwwweg5603150>

border: none; min-width: min(100%, 430px);Carolyn Allen / Industrial Designer | Highlander Podcast<https://www.podbean.com/player-v2/?i=4jsm4-10513f6-pb&from=pb6admin&download=1&share=1&download=1&rtl=0&font=Arial&skin=1&btn-skin=7100%150nopb-iframe-player>

CONTACTS

Chase Anderson