

Semesters to Completion & Percentage Meeting Target Limits

	MS Semesters to Completion	MS % w/in Target	PhD Semesters to Completion	PhD % w/in Target
AY 05-06	5,6,6,6,7	0	11	0
AY 06-07	4,5,5,6,7,7,7,8,9	10%	10,13,13,15	25%
AY 07-08	4,6,6,6,7,7,8,9,10	10%	12	0
AY 08-09	5,6,8,9,13	0	-	-
AY 09-10	5,5,5,5,6,7,7,7,10	0	11,11	0
AY 10-11	6,9,9,11,17	0	14,15	0
AY 11-12	5,5,5,5,6,6,8,9,11	0	-	-
AY 12-13	5,5,6,6,6,7,7,8,10	0	11,12,13,15,22	0
AY 13-14	5,6,6,6,7,7,8,9,13	0	11,11,25	0
AY 14-15	5,7,7,7,10,11	0	13	0
AY 15-16	5,6,7,7,8,8,10,13,13	0	11,17	0

AY represents year students completed, not began program.

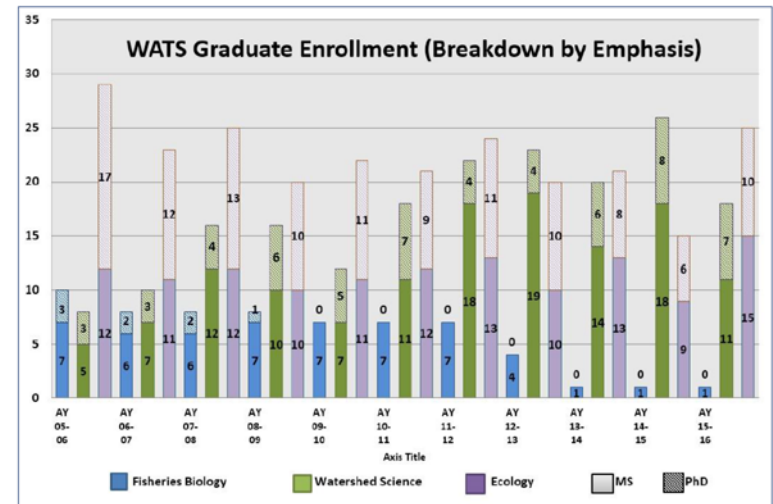
Summer semesters are not included, unless a student began or finished during a Summer semester.

MS Target = 4 semesters; PhD Target = 10 semesters

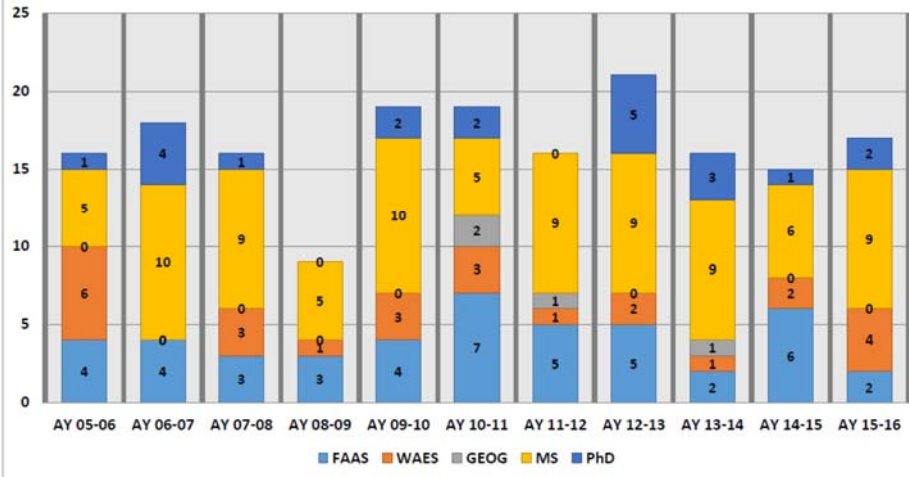
Average GRE Scores & Entry GPA - Graduate Program

	Verbal Score	Verbal Percentile	Quantitative Score	Quantitative Percentile	Acceptance GPA
AY 05-06	578	77	654	61	3.44
AY 06-07	565	75	639	57	3.59
AY 07-08	502	59	632	56	3.37
AY 08-09	520	63	644	59	3.38
AY 09-10	552	70	656	61	3.61
AY 10-11	552	70	652	59	3.49
AY 11-12	523	66	633	54	3.56
AY 12-13*	155	67	154	64	3.45
AY 13-14	158	74	155	65	3.43
AY 14-15	156	67	152	50	3.6
AY 15-16	158	74	155	63	3.54
AY 16-17	162	85	159	72	3.64
		71		60	3.51

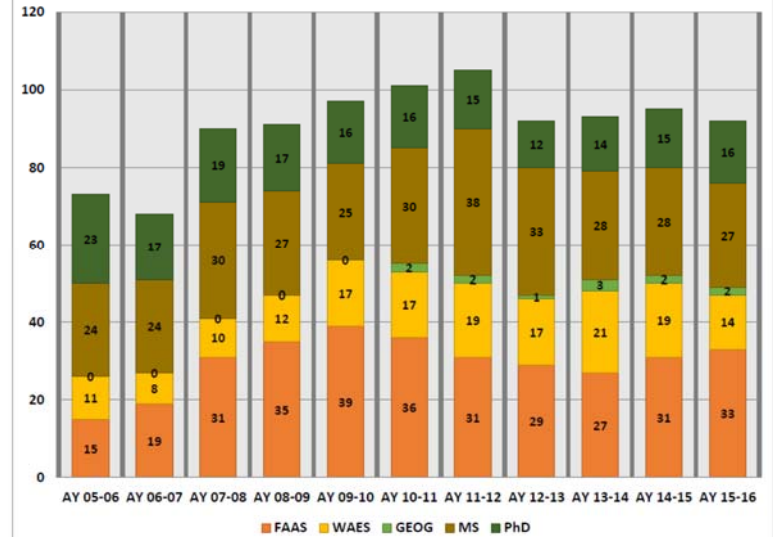
* ETS changed GRE scoring scale.



WATS Total Degrees Awarded



WATS Undergraduate & Graduate Enrollment



WATS Degree Enrollment

	Undergraduate				Graduate		
	FAAS	WAES	GEOG	Total	MS	PhD	Total
AY 05-06	15	11	0	26	24	23	47
AY 06-07	19	8	0	27	24	17	41
AY 07-08	31	10	0	41	30	19	49
AY 08-09	35	12	0	47	27	17	44
AY 09-10	39	17	0	56	25	16	41
AY 10-11	36	17	2	55	30	16	46
AY 11-12	31	19	2	52	38	15	53
AY 12-13	29	17	1	47	33	12	45
AY 13-14	27	21	3	51	28	14	42
AY 14-15	31	19	2	52	28	15	43
AY 15-16	24	13	2	39	27	16	43

Graduate Student Breakdown

	FSBG			WASC			ECOL				FSBG	WASC	ECOL	TOTAL
	MS	PhD	Total	MS	PhD	Total	MS	PhD	Total					
AY 05-06	7	3	10	5	3	8	12	17	29	AY 05-06	30%	38%	59%	49%
AY 06-07	6	2	8	7	3	10	11	12	23	AY 06-07	25%	30%	52%	41%
AY 07-08	6	2	8	12	4	16	12	13	25	AY 07-08	25%	25%	52%	39%
AY 08-09	7	1	8	10	6	16	10	10	20	AY 08-09	13%	38%	50%	39%
AY 09-10	7	0	7	7	5	12	11	11	22	AY 09-10	0%	42%	50%	39%
AY 10-11	7	0	7	11	7	18	12	9	21	AY 10-11	0%	39%	43%	35%
AY 11-12	7	0	7	18	4	22	13	11	24	AY 11-12	0%	18%	46%	28%
AY 12-13	4	0	4	19	4	23	10	10	20	AY 12-13	0%	17%	50%	27%
AY 13-14	1	0	1	14	6	20	13	8	21	AY 13-14	0%	30%	38%	33%
AY 14-15	1	0	1	18	8	26	9	6	15	AY 14-15	0%	31%	40%	35%
AY 15-16	1	0	1	12	6	18	14	10	24	AY 15-16	0%	33%	42%	37%